

Sand Trap Louver

STL - 100

STL - 100



STL - 100

Sand Trap Louver is normally used as prefilter for fresh air intake of Air Handling Units (AHU), Package Air Conditioning Units (PACU), Roof Top Fresh Air Units (RTFAU) for Air Conditioning Systems and for Fresh Air Intake in manufacturing plants. It has a high degree of separation of sand and large dust particles even in case of high dust concentrations. The vertically arranged blade sections and holes for sand drainage ensure that the sand trap louver is self cleaning and maintenance free. It is designed to separate large particles of sand and dust from airstream at low velocities, thus avoiding excessive dust loading of conventional filters. It is not intended as a substitute for conventional filters.

Construction Standard

FRAME:

Gauge 14 (2mm thick) formed Aluminum.

BLADES:

Gauge 16 (1.5mm thick) formed Aluminum.

SCREEN:

Galvanized steel insect mesh fixed behind the blades . **Please note that Pressure Drop Data is obtained from AMCA Test without bird screen.** Pressure drop of bird screen is additive and to be calculated separately.

MINIMUM SIZE:

150 X 150mm (6in X 6in) - Neck Size.

MAXIMUM SIZE:

2500 X 1200mm as single section (Neck Size).
2500 X 2500mm will be single module with 2 sections vertical blades and with sand chute between.
Consult SAFID for multiple section assembly details.



SAFID certifies that the Sand Trap Louver shown herein is licensed to bear the AMCA Seal for Model STL - 100. The ratings shown are based on tests and procedures performed in accordance with AMCA Publication 511 and comply with the requirements of the AMCA Certified Ratings Program.

The AMCA Certified Ratings Seal applies to Air Performance Ratings and Wind Driven Sand Rejection.

Test Information

Tested for Air Performance, Figure 5.5 and Sand Rejection, Figure 5.12 in accordance with ANSI / AMCA Standard 500-L-12.

STL - 110

General construction as type STL - 100 but frame and blades are built from mill finish aluminum.

STL - 120

General construction as type STL - 100 but frame and blades are built from extruded aluminum profiles.

STL - 130

General construction as type STL - 100 but frame and blades are built from stainless steel sheet Grade 304.

OPTIONAL: Frame and blades from stainless steel Grade 316 or 316L.

Optional Extras

- * **Code Z**
Painted to RAL (epoxy coated).
- * **Code I**
Insect screen in galvanized steel 1 X 1 X 0.4mm.
- * **Code T**
Bird screen in stainless steel 5 X 5 X 0.7mm.

Catalog ID: STL - 100 November 3, 2013

Right to alterations reserved.

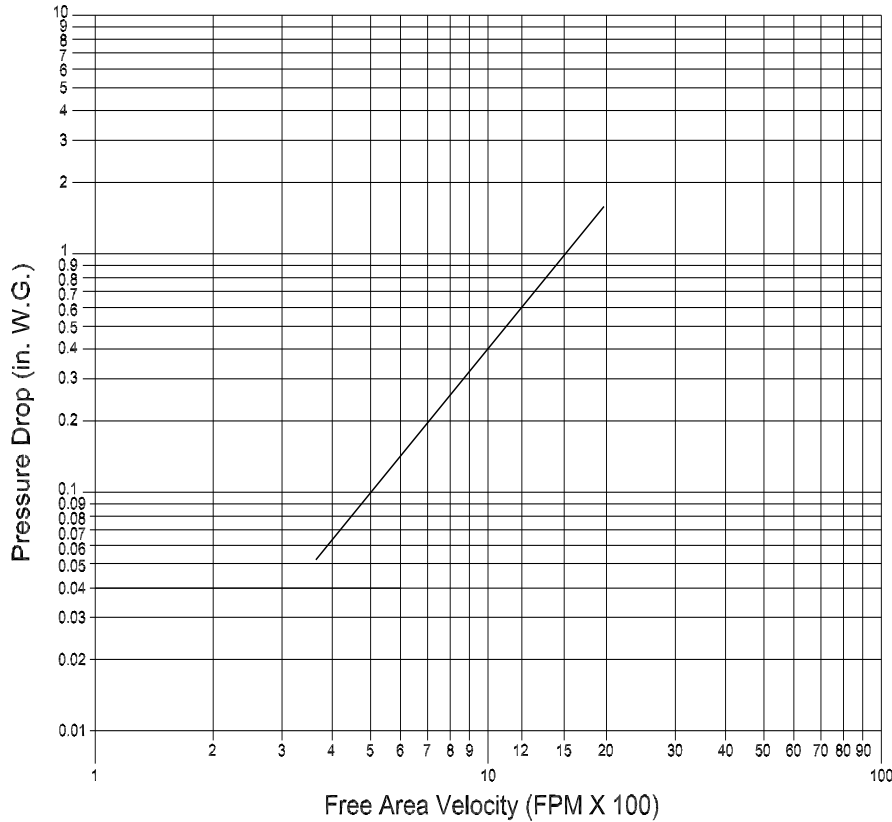
Sand Trap Louver

STL - 100

Air Performance

Pressure Drop

Intake Air Performance



SAFID certifies that the Sand Trap Louver shown herein is licensed to bear the AMCA Seal for Model STL - 100. The ratings shown are based on tests and procedures performed in accordance with AMCA Publication 511 and comply with the requirements of the AMCA Certified Ratings Program.

The AMCA Certified Ratings Seal applies to Air Performance Ratings and Wind Driven Sand Rejection.

Test Information
 Tested for Air Performance, Figure 5.5 and Sand Rejection, Figure 5.12 in accordance with ANSI / AMCA Standard 500-L-12.

Catalog ID: STL - 100 November 3, 2013

Right to alterations reserved.

Sand Trap Louver

STL - 100

Air Performance

Free Area Chart (Sq. Ft.)

OUTER FRAME SIZE (W1 inches)

OUTER FRAME SIZE (H1 inches)

	16	24	28	36	40	48	52	60	64	68	76	84	88	92	100	104
16	0.31	0.47	0.62	0.78	0.94	1.09	1.25	1.40	1.56	1.72	1.87	2.03	2.19	2.34	2.50	2.65
24	0.53	0.79	1.05	1.32	1.58	1.85	2.11	2.37	2.64	2.90	3.16	3.43	3.69	3.96	4.22	4.48
28	0.64	0.95	1.27	1.59	1.91	2.22	2.54	2.86	3.18	3.49	3.81	4.13	4.45	4.76	5.08	5.40
36	0.85	1.28	1.70	2.13	2.55	2.98	3.40	3.83	4.25	4.68	5.10	5.53	5.95	6.38	6.80	7.23
40	0.96	1.44	1.92	2.39	2.87	3.35	3.83	4.31	4.79	5.27	5.75	6.23	6.71	7.18	7.66	8.14
48	1.17	1.76	2.35	2.93	3.52	4.43	4.69	5.28	5.87	6.45	7.04	7.63	8.21	8.80	9.39	9.97
52	1.28	1.92	2.56	3.20	3.84	4.48	5.12	5.76	6.40	7.05	7.69	8.33	8.97	9.61	10.25	10.89
60	1.39	2.08	2.78	3.47	4.17	4.86	5.55	6.25	6.94	7.64	8.33	9.03	9.72	10.41	11.11	11.80
64	1.50	2.24	2.99	3.74	4.49	5.24	5.98	6.73	7.48	8.23	8.98	9.73	10.47	11.22	11.97	12.72
68	1.60	2.41	3.21	4.01	4.81	5.61	6.42	7.22	8.02	8.82	9.62	10.42	11.23	12.03	12.83	13.63
76	1.82	2.73	3.64	4.55	5.46	6.37	7.28	8.19	9.10	10.01	10.91	11.82	12.73	13.64	14.55	15.46
84	2.03	3.05	4.07	5.09	6.10	7.12	8.14	9.15	10.17	11.19	12.21	13.22	14.24	15.26	16.28	17.29
88	2.14	3.21	4.28	5.36	6.43	7.50	8.57	9.64	10.71	11.78	12.85	13.92	14.99	16.07	17.14	18.21
92	2.25	3.37	4.50	5.62	6.75	7.87	9.00	10.12	11.25	12.37	13.50	14.62	15.75	16.87	18.00	19.12
100	2.46	3.70	4.93	6.16	7.39	8.63	9.86	11.09	12.32	13.56	14.79	16.02	17.25	18.49	19.72	20.95
104	2.57	3.86	5.15	6.43	7.72	9.00	10.29	11.58	12.86	14.15	15.44	16.72	18.01	19.29	20.58	21.87

NOTE:
See Table 1 for the equivalent neck size (W X H).



SAFID certifies that the Sand Trap Louver shown herein is licensed to bear the AMCA Seal for Model STL - 100. The ratings shown are based on tests and procedures performed in accordance with AMCA Publication 511 and comply with the requirements of the AMCA Certified Ratings Program.
The AMCA Certified Ratings Seal applies to Air Performance Ratings and Wind Driven Sand Rejection.
Test Information
Tested for Air Performance, Figure 5.5 and Sand Rejection, Figure 5.12 in accordance with ANSI / AMCA Standard 500-L-12.

Catalog ID: STL - 100 November 3, 2013

Right to alterations reserved.



Sand Trap Louver

STL - 100

Sand Filtration Performance Data

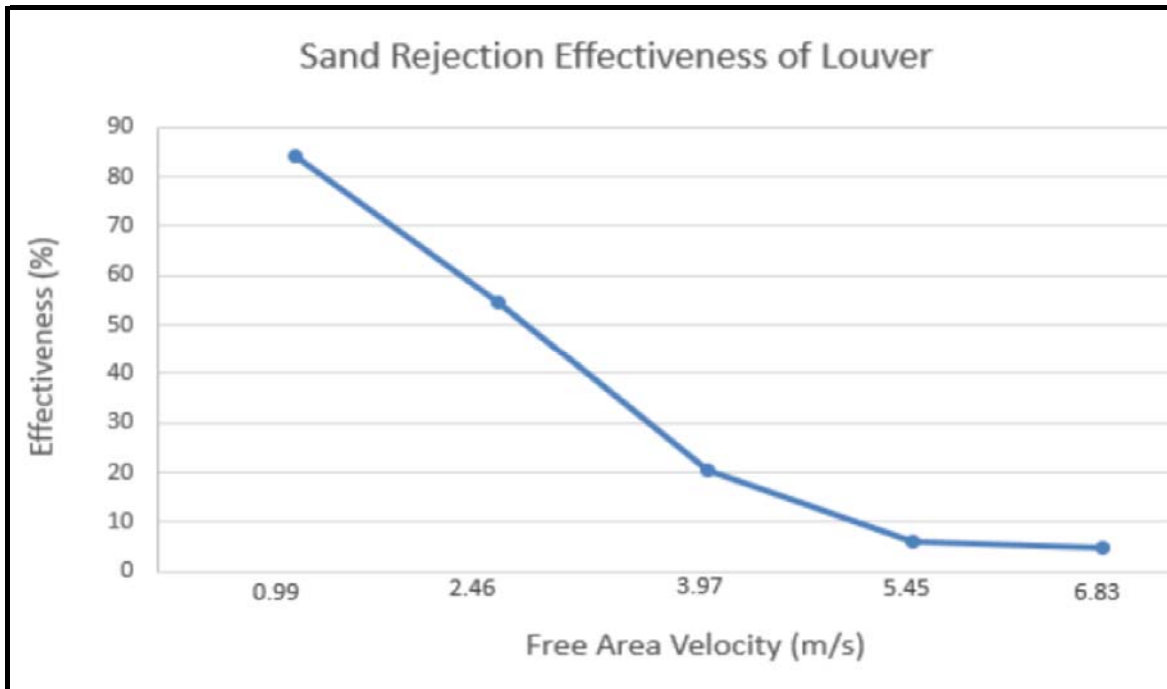
Wind Driven Sand at 22m/s.

Simulated wind velocity in accordance with ANSI/AMCA Standard 500-L.

Tested for Sand Rejection Effectiveness as per ANSI/AMCA Standard 500-L.

AMCA Test Figure 5.12

Sand Rejection Effectiveness (%)						
Sand Particles Grade in microns (μm)	Effectiveness at Free Area Velocity					
	0.98	2.48	4.06	5.44	6.96	m/s
76 - 699	80.48	51.00	13.62	4.94	3.54	%



SAFID certifies that the Sand Trap Louver shown herein is licensed to bear the AMCA Seal for Model STL - 100. The ratings shown are based on tests and procedures performed in accordance with AMCA Publication 511 and comply with the requirements of the AMCA Certified Ratings Program. The AMCA Certified Ratings Seal applies to Air Performance Ratings and Wind Driven Sand Rejection.

Test Information
Tested for Air Performance, Figure 5.5 and Sand Rejection, Figure 5.12 in accordance with ANSI / AMCA Standard 500-L-12.

Catalog ID: STL - 100 November 3, 2013

Right to alterations reserved.

Sand Trap Louver

STL - 100

Sand Filtration Performance Data

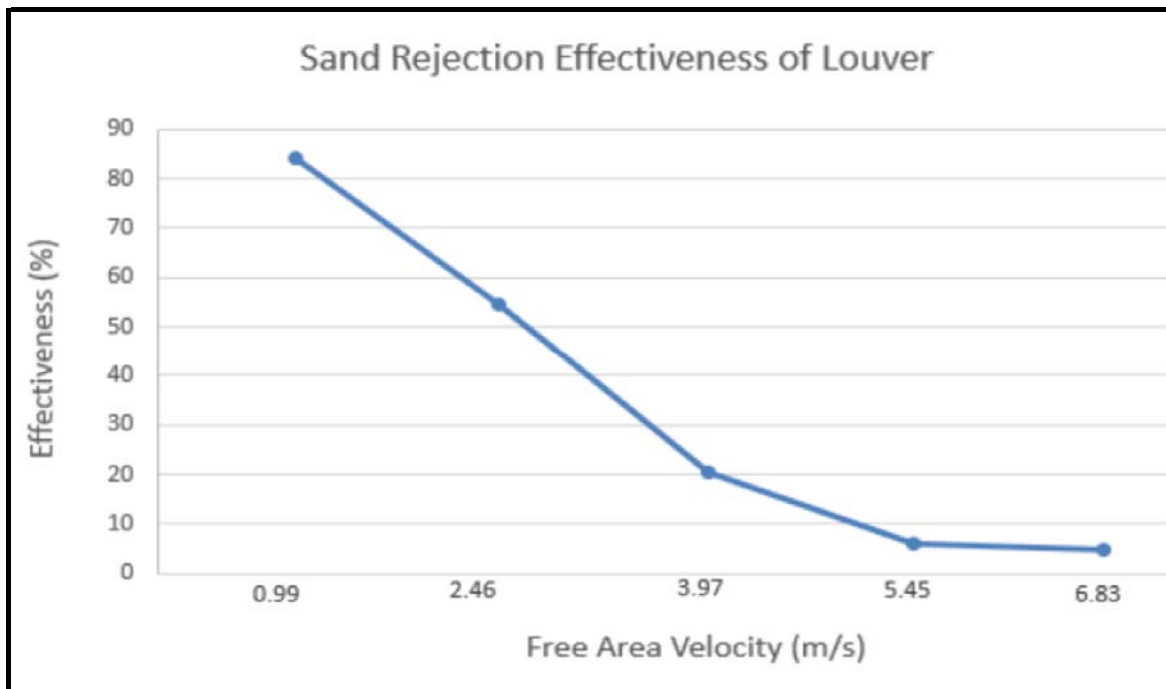
Wind Driven Sand at 11m/s.

Simulated GCC maximum wind velocity.

Tested for Sand Rejection Effectiveness as per ANSI/AMCA Standard 500-L.

AMCA Test Figure 5.12

Sand Rejection Effectiveness (%)						
Sand Particles Grade in microns (µm)	Effectiveness at Free Area Velocity					
	0.99	2.46	3.97	5.45	6.83	m/s
76 - 699	83.95	54.69	20.50	6.23	4.79	%



SAFID certifies that the Sand Trap Louver shown herein is licensed to bear the AMCA Seal for Model STL - 100. The ratings shown are based on tests and procedures performed in accordance with AMCA Publication 511 and comply with the requirements of the AMCA Certified Ratings Program. The AMCA Certified Ratings Seal applies to Air Performance Ratings and Wind Driven Sand Rejection.
Test Information
 Tested for Air Performance, Figure 5.5 and Sand Rejection, Figure 5.12 in accordance with ANSI / AMCA Standard 500-L-12.

Catalog ID: STL - 100 November 3, 2013

Right to alterations reserved.

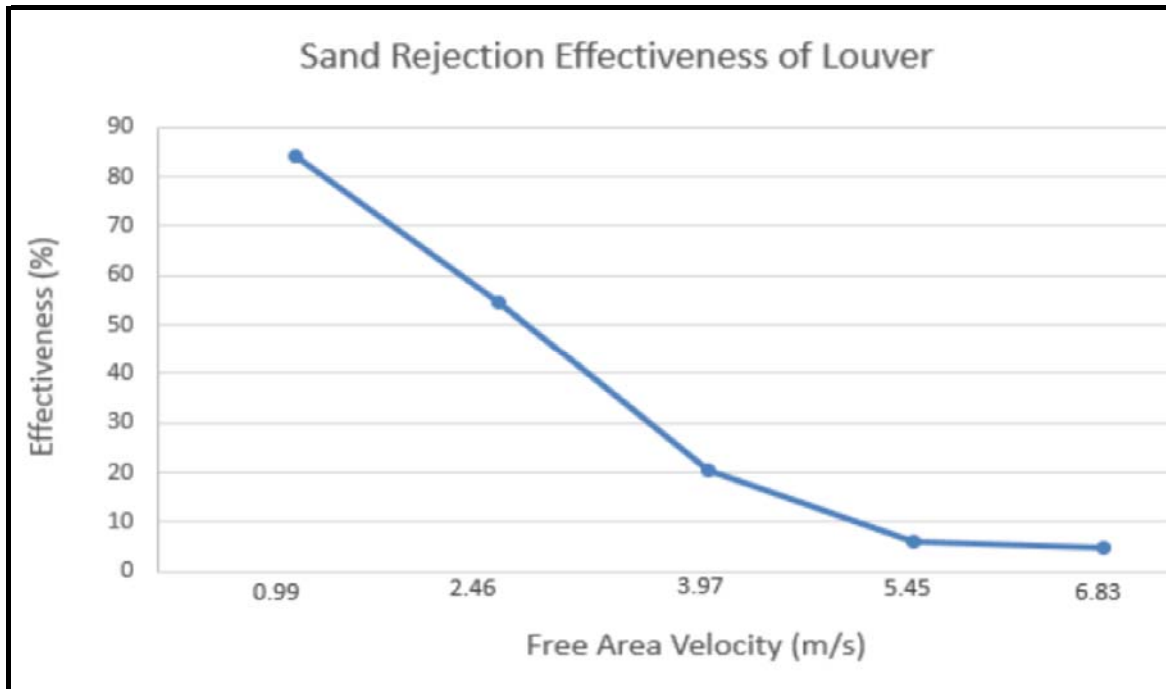
Sand Trap Louver

STL - 100

Sand Filtration Performance Data

Wind Driven Sand at 7m/s.
Simulated GCC average daily maximum wind velocity.
 Tested for Sand Rejection Effectiveness as per ANSI/AMCA Standard 500-L.
 AMCA Test Figure 5.12

Sand Rejection Effectiveness (%)						
Sand Particles Grade in microns (µm)	Effectiveness at Free Area Velocity					
	0.98	2.48	4.06	5.44	6.96	m/s
76 - 699	87.50	57.39	32.77	13.52	7.04	%



SAFID certifies that the Sand Trap Louver shown herein is licensed to bear the AMCA Seal for Model STL - 100. The ratings shown are based on tests and procedures performed in accordance with AMCA Publication 511 and comply with the requirements of the AMCA Certified Ratings Program. The AMCA Certified Ratings Seal applies to Air Performance Ratings and Wind Driven Sand Rejection.

Test Information
 Tested for Air Performance, Figure 5.5 and Sand Rejection, Figure 5.12 in accordance with ANSI / AMCA Standard 500-L-12.

Catalog ID: STL - 100 November 3, 2013

Right to alterations reserved.

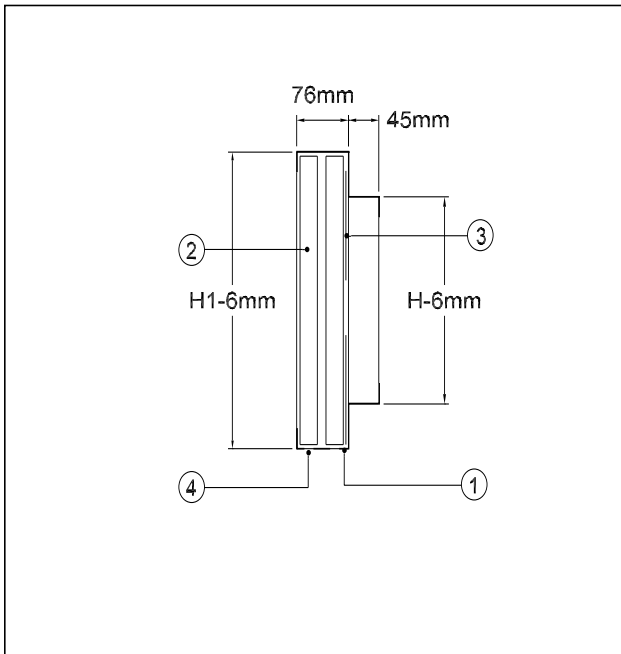
Sand Trap Louver

STL - 100

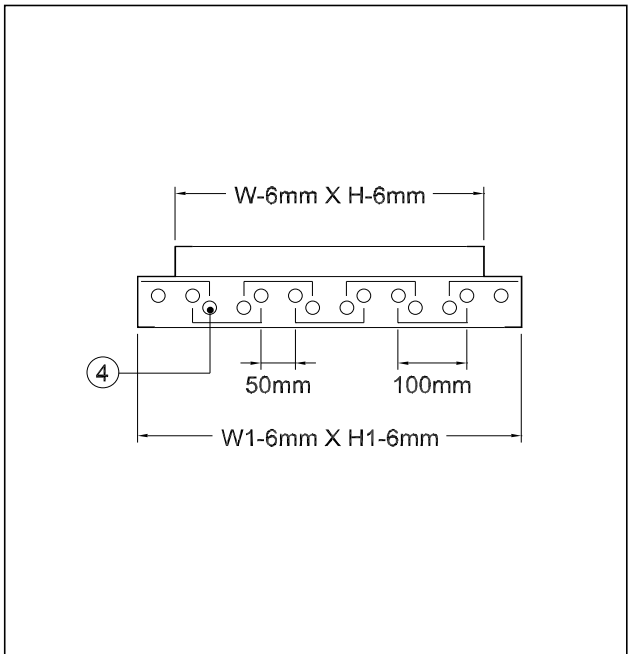
Construction - Dimension and details

1 - Casing	2 - Blades	3 - Bird Screen (optional)	4 - Drain Hole
------------	------------	----------------------------	----------------

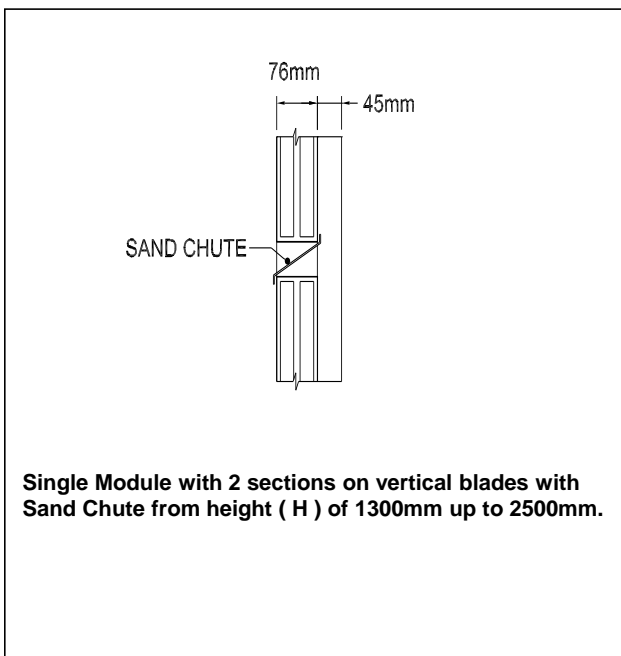
Vertical Section



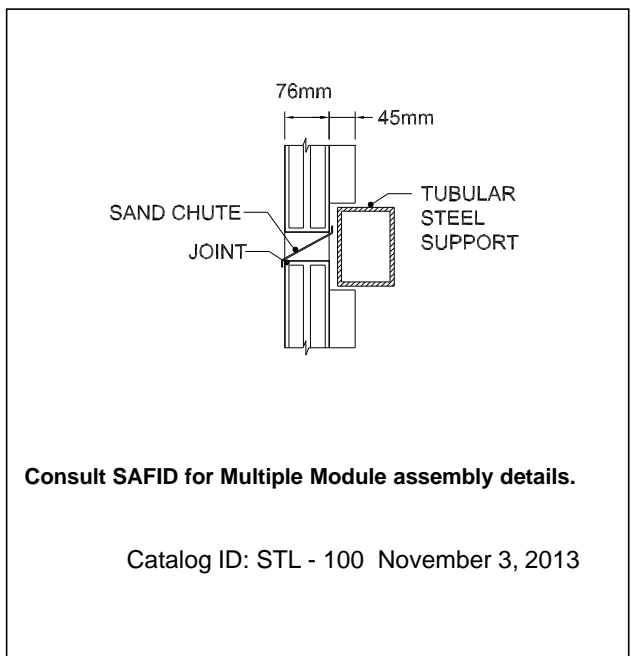
Horizontal Section



Single Module with Sand Chute



Multiple Module with Sand Chute



Right to alterations reserved.

Sand Trap Louver

STL - 100

Table 1

Outer Frame Size (in.)	Neck Size (mm)
W1 X H1	W X H
16 X 16	300 X 300
20 X 20	400 X 400
24 X 24	500 X 500
28 X 28	600 X 600
32 X 32	700 X 700
36 X 36	800 X 800
40 X 40	900 X 900
44 X 44	1000 X 1000
48 X 48	1100 X 1100
52 X 52	1200 X 1200
56 X 56	1300 X 1300
60 X 60	1400 X 1400
64 X 64	1500 X 1500
68 X 68	1600 X 1600
72 X 72	1700 X 1700
76 X 76	1800 X 1800
80 X 80	1900 X 1900
84 X 84	2000 X 2000
88 X 88	2100 X 2100
92 X 92	2200 X 2200
96 X 96	2300 X 2300
100 X 100	2400 X 2400
104 X 104	2500 X 2500

Selection Example

For normal operation condition the sand trap louvers should be selected for a maximum free area velocity of 600 feet per minute (FPM).

Example:

Given:

Airflow: 2658 CFM

Assumed free area velocity: 600 FPM

Calculate for free area, neck size and pressure drop.

1. Free Area = 2658 CFM / 600 FPM = 4.43 ft².
2. From **Free Area Chart** the outer frame size is 48in X 48in (W1 X H1).
3. From **Table 1** neck size is 1100mm X 1100mm (W X H).
4. Pressure drop = 0.151 in. W.G. (38Pa).

Note:

For optional screens the pressure drop is additive and to be calculated separately.

Order Example

Order Code: STL - 100 - a - aaa x aaa

Product Type:

STL - 100 _____

STL - 110 _____

STL - 120 _____

STL - 130 _____

_____ Sizes

With optional extras

Z = Painted to RAL (epoxy coated) _____

I = Insect screen in galvanizd _____

T = Bird screen in stainless steel _____

Ordering:

Make: SAFID

Type : STL - 100 - 500 X 500

Qty. : 1

Catalog ID: STL - 100 November 3, 2013

Right to alterations reserved.